

Aleratec®

www.aleratec.com

The Prosumers' Choice

SOFTWARE USER GUIDE

Aleratec
1:10 USB Copy Cruiser Mini™



Part No. 330109



Aleratec[®]
www.aleratec.com
The Prosumers' Choice

Table of Contents

Introduction.....	1
Initial System Setup.....	1
Using the USB Duplication Suite Software	2
Main Menu.....	2
Data Copy Only	3
Format Only.....	9
Format Then Data Copy	14
Create Image File.....	20
Clone Image File.....	22
Drive Letter Management.....	24
Technical Support	26
Technical Support FAX Back Form	27



Aleratec[®]
www.aleratec.com
The Prosumers' Choice

Introduction

Thank you for purchasing the 1:10 USB Copy Cruiser Mini. Please read this Software User Guide thoroughly before using this product.

Initial System Setup

1. Attach the Aleratec 1:10 USB Copy Cruiser Mini to your computer using the High Speed USB 2.0 cable provided.
2. You should see a notification in the lower right hand corner of your screen that your computer found new hardware.
3. Insert the CD* that came with your 1:10 USB Copy Cruiser Mini to install the Aleratec USB Duplication Suite and Aleratec USB Key Cleaner.

Note: Using the Aleratec USB Key Cleaner

- A. This utility is used to help solve the issue of USB drives not being recognized by your computer.
 - B. From the main screen, click “Run Now”
 - C. You will then be prompted to restart your computer now or later. In order for the cleaning process to take effect you must restart your computer.
 - D. Upon restarting your computer you will notice in the system tray “Found New Hardware” notifications as Windows sets up the devices that are currently plugged into one of the USB ports on your computer. Note: This could take a few minutes to complete depending on the number of devices you have connected.
 - E. After all the device drivers are reinstalled you are ready to begin the duplication process again.
4. Start the USB Duplication Suite duplication software via the icon on your Desktop or in the Start menu under “All Programs.”



USB Duplication Suite

* Please contact Aleratec support if your computer does not have an optical drive to load the software.

Using the USB Duplication Suite Software

Main Menu

The USB Duplication Suite's main menu offers six functions:

1. Data Copy Only
2. Format Only
3. Format Then Data Copy
4. Create Image File
5. Clone Image File
6. Drive Management

Choose the desired option from the drop down menu.



Using the USB Duplication Suite Software

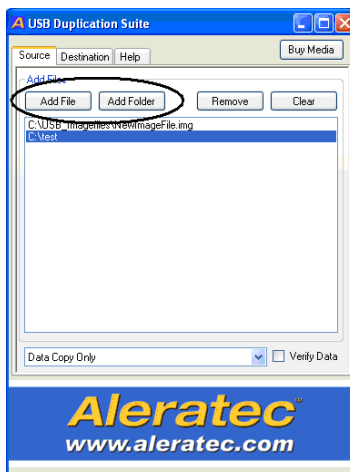
Data Copy Only

Use this function to copy the contents of a folder to one or more USB flash drives. This function will overwrite any files/folders on the target device(s) with the same name as the source files/folders.

1. Start by choosing Data Copy Only from the drop down menu.



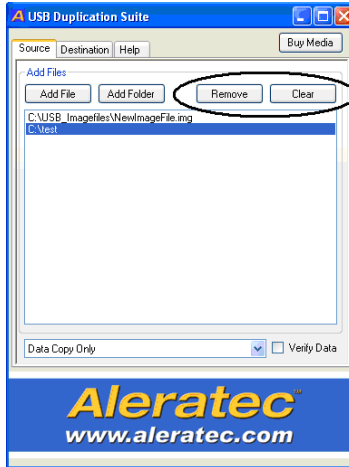
2. On the same screen, click “Add Files” to copy individual files or “Add Folder” to copy an entire folder.



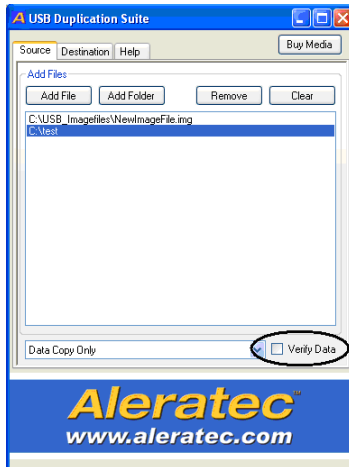
Using the USB Duplication Suite Software

Data Copy Only - *continued*

3. If you wish to remove an added file or folder, select the item and click “Remove”. To clear the list of files/folders to add, click “Clear”.



4. If you wish to verify the source data is copied successfully, click to check the box next to “Verify Data”.

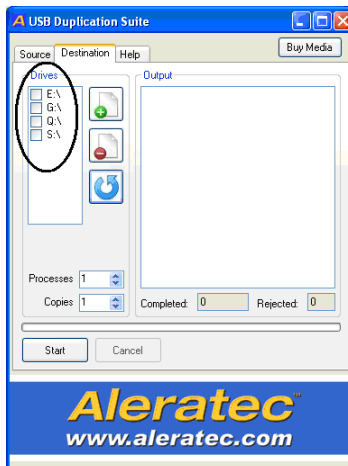


Using the USB Duplication Suite Software

- Once you have added all the files/folders you want to copy, click the tab at the top of the window named “Destination”.



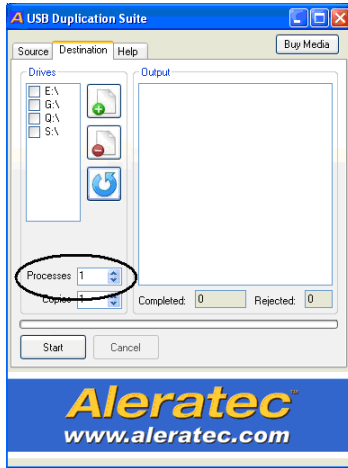
- Click to select each USB flash drive that you want to copy to. You can click the button with the green “+” symbol to select all drives or the button with the red “-” symbol to deselect all drives. The button with the blue arrow will refresh the current list of drives.



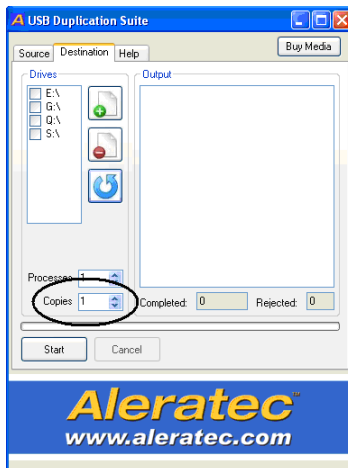
Using the USB Duplication Suite Software

Data Copy Only - *continued*

7. The “Processes” counter displays how many concurrent processes you want to run at once. The more processes you choose the more drives will be copied to simultaneously.

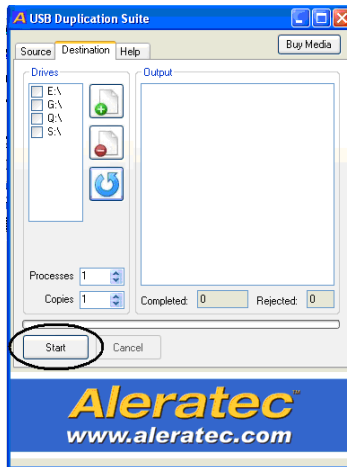


8. The “Copies” counter is the total number of copies you want to do. If the number of copies specified is more than the number of available drive slots, the software will break up the job into multiple “rounds”, requiring the user to switch in new cards after each round is completed.

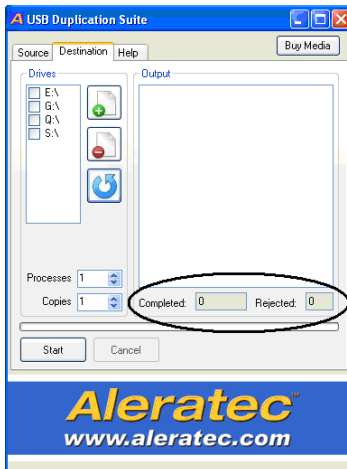


Using the USB Duplication Suite Software

- Once the drives, processes, and copies are specified, the user may click “Start” to begin the duplication process.



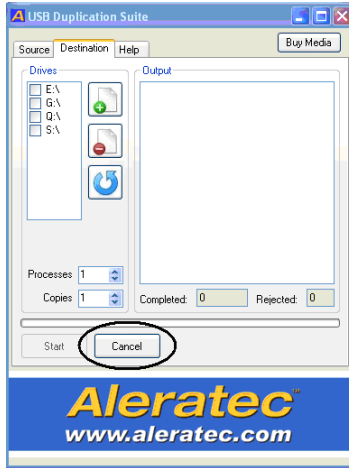
- Progress is displayed through messages in the log and in the progress bar. Also, the number of completed and rejected copies is displayed underneath the output log.



Using the USB Duplication Suite Software

Data Copy Only - *continued*

11. If the user wishes to cancel the duplication process at any time, just click “Cancel”.



Using the USB Duplication Suite Software

Format Only

Format one or more USB flash drives with this command (FAT formatting only). A volume label to identify the media is added at the same time.

Note: The “Add File” interface will be disabled since it is not used.

1. Start by clicking on “Format Only” from the drop down menu.



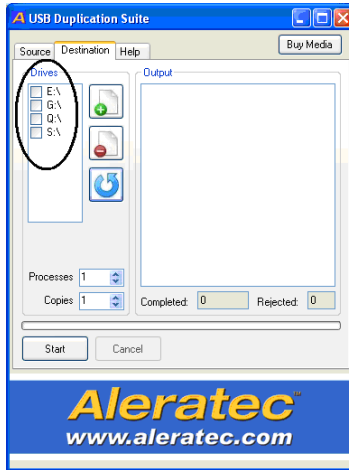
2. Click on the “Destination” tab located at the top of the window.



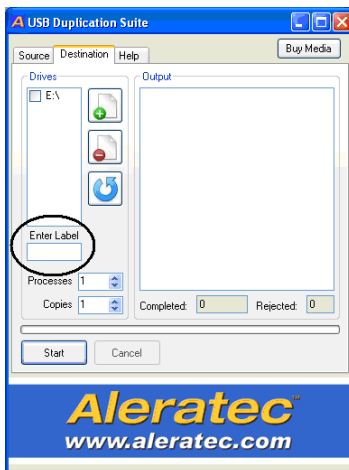
Using the USB Duplication Suite Software

Format Only - *continued*

3. Select the drives that you wish to format. You can click the button with the green “+” symbol to select all drives or the button with the red “-” symbol to deselect all drives. The button with the blue arrow will refresh the current list of drives.

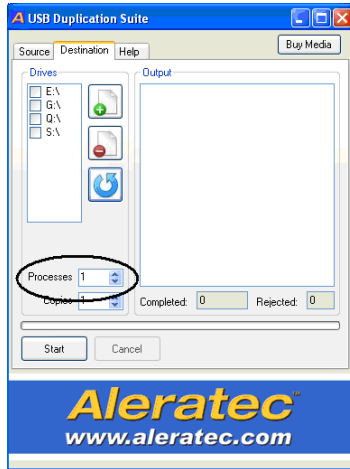


4. You can specify a single label for each drive in the text box under “Enter Label”. If no label is specified, the label that the drive currently has will be used.

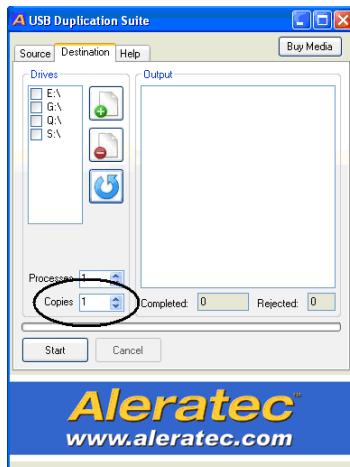


Using the USB Duplication Suite Software

- The “Processes” counter displays how many concurrent processes you want to run at once. The more processes you choose the more drives will be copied to simultaneously.



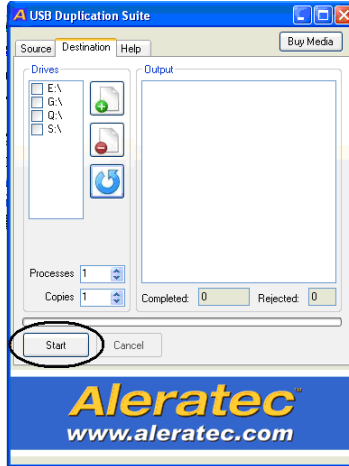
- The “Copies” counter is the total number of copies you want to do. If the number of copies specified is more than the number of available drive slots, the software will break up the job into multiple “rounds”, requiring the user to switch in new cards after each round is completed.



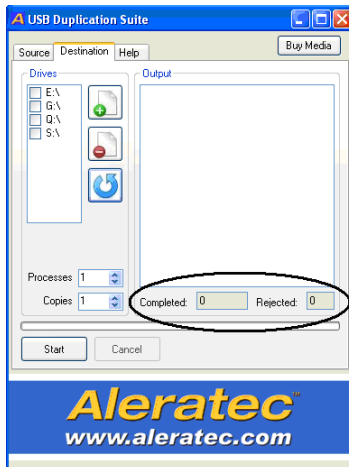
Using the USB Duplication Suite Software

Format Only - *continued*

7. Once the drives, processes, and copies are specified, the user may click “Start” to begin the duplication process.

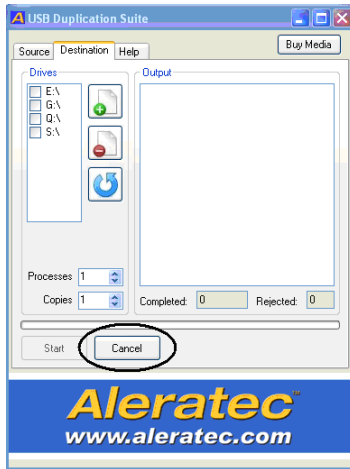


8. Progress is displayed through messages in the log and in the progress bar. Also, the number of completed and rejected copies is displayed underneath the output log.



Using the USB Duplication Suite Software

9. If the user wishes to cancel the duplication process at any time, just click “Cancel”.



Using the USB Duplication Suite Software

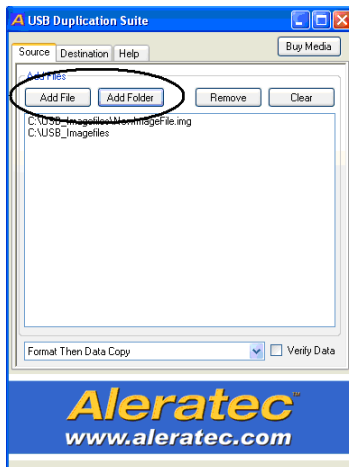
Format Then Data Copy

This function will format and then copy files/folders to one or more USB flash drives. Any files/folders on the target device(s) with the same names as any source files/folders will be overwritten.

1. Start by clicking on “Format Then Data Copy” from the drop down menu.

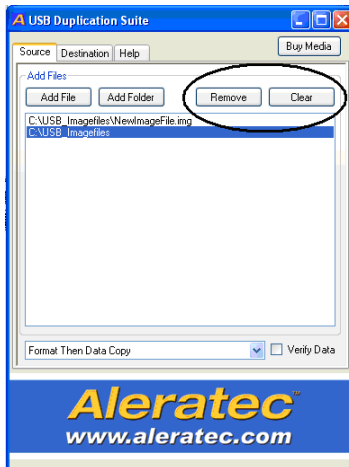


2. On the same screen, click “Add Files” to copy individual files or “Add Folder” to copy an entire folder.

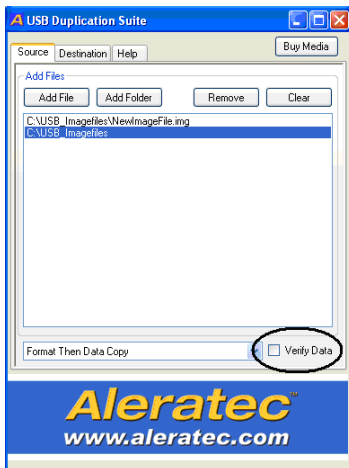


Using the USB Duplication Suite Software

3. If you wish to remove an added file or folder, select the item and click “Remove”. To clear the list of files/folders to add, click “Clear”.



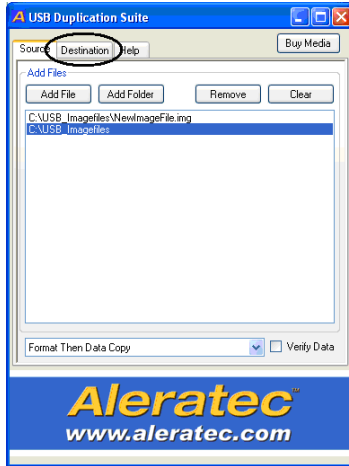
4. If you wish to verify the source data is copied successfully, click to check the box next to “Verify Data”.



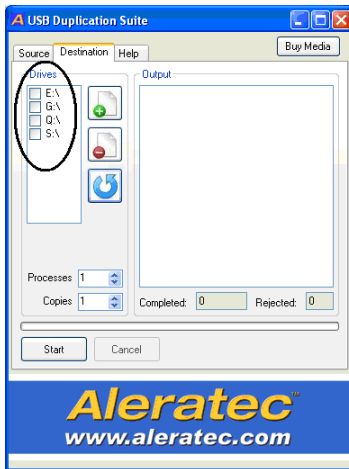
Using the USB Duplication Suite Software

Format Then Data Copy - *continued*

- Once you have added all the files/folders you want to copy, click the tab at the top of the window named “Destination”.

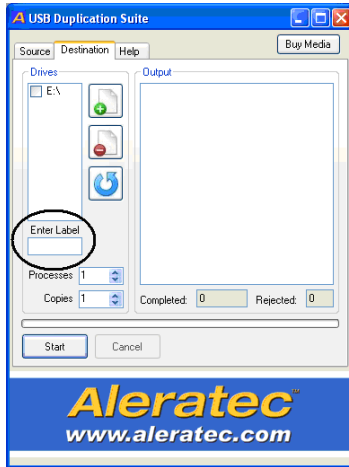


- Select the drives that you wish to format. You can click the button with the green “+” symbol to select all drives or the button with the red “-” symbol to deselect all drives. The button with the blue arrow will refresh the current list of drives.

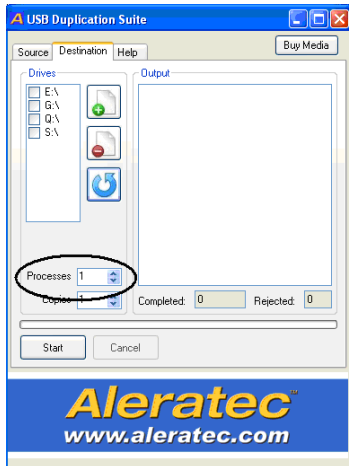


Using the USB Duplication Suite Software

7. You can specify a single label for each drive in the text box under “Enter Label”. If no label is specified, the label that the drive currently has will be used.



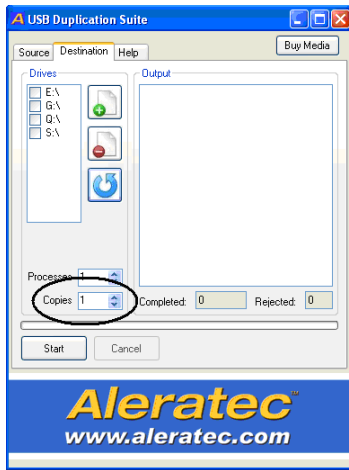
8. The “Processes” counter displays how many concurrent processes you want to run at once. The more processes you choose the more drives will be copied to simultaneously.



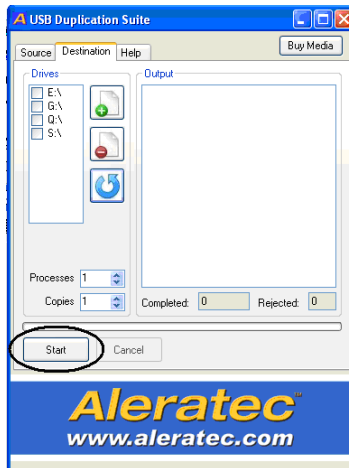
Using the USB Duplication Suite Software

Format Then Data Copy - *continued*

- The “Copies” counter is the total number of copies you want to do. If the number of copies specified is more than the number of available drive slots, the software will break up the job into multiple “rounds”, requiring the user to switch in new cards after each round is completed.

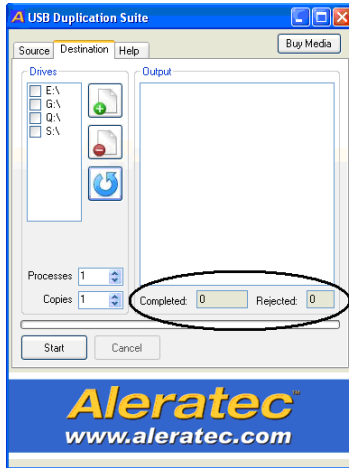


- Once the drives, processes, and copies are specified, the user may click “Start” to begin the duplication process.

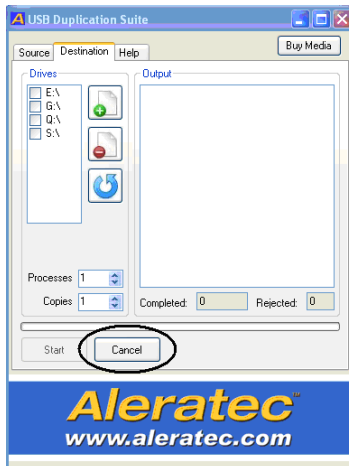


Using the USB Duplication Suite Software

- Progress is displayed through messages in the log and in the progress bar. Also, the number of completed and rejected copies is displayed underneath the output log.



- If the user wishes to cancel the duplication process at any time, just click "Cancel".



Using the USB Duplication Suite Software

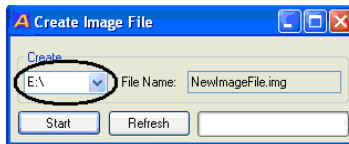
Create Image File

Use this function to create an image file from a single USB flash drive.

1. From the main menu, choose “Create Image File.” The “Create Image File” module will then pop up.

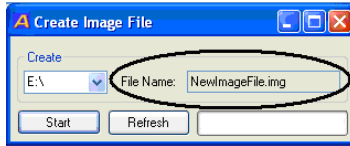


2. On the left hand side of the screen, you will see a drop-down menu with a list of current drives available. From here, you may choose which drive you want to make an image of. If the desired drive does not appear in this list, you may hit the “Refresh” button located at the bottom of the screen to refresh the list. If there are still problems then skip ahead to the section titled “Drive Letter Management”.

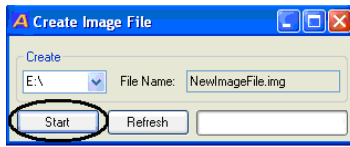


Using the USB Duplication Suite Software

3. In the box labeled “File Name”, you may enter the name of what you want to call the newly created image. Include .img at the end of the name. All image files are automatically saved in C:\USB_imagefiles\.



4. Click on “Start” to begin the image creation process. A DOS window will pop up to indicate that the image is being created. Please wait until this screen closes.



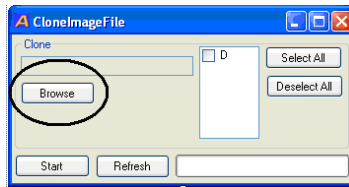
Using the USB Duplication Suite Software

Clone Image File

1. From the main menu, choose “Clone Image File.” The “Clone Image File” module will then pop up.

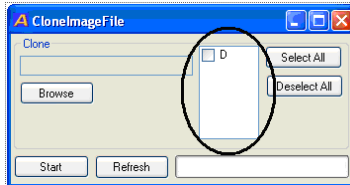


2. Click the “Browse” button on the left hand to select the image file that you want to clone. The name of the image file will appear in the box above the “Browse” button.

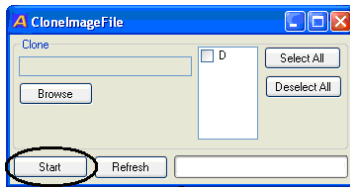


Using the USB Duplication Suite Software

3. Select the drives that you wish to clone to. You can click the “Select All” or “Deselect All” buttons to select or deselect all the drives in the list, respectively. You may also click the “Refresh” button to refresh the list of drives, if the desired drive is not in the list. If there are still problems, skip ahead to the “Drive Letter Management” section.



4. Click the “Start” button to begin the cloning process. A DOS window will pop up to indicate that the image is being cloned. Please wait until this screen closes.



Using the USB Duplication Suite Software

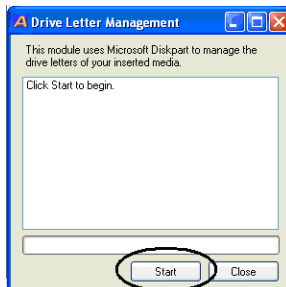
Drive Letter Management

This module will search your computer for any removable media that do not have any drive letters associated with them and will appropriate one for them. You may use this module if your removable media is not being displayed while using this software.

1. From the main menu, choose “Drive Letter Management.” The “Drive Letter Management” module will then pop up.

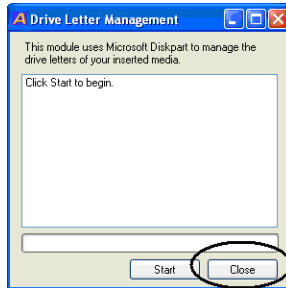


2. Click the “Start” button to begin the process. You will see two DOS windows pop up. The first will remove the drive letters from any removable media with drive letters on them. The second will reapportion the letters to all removable media so that previous media that did not have a drive letter associated with them will now. Do not close the DOS windows until the process is complete.



Using the USB Duplication Suite Software

3. Once the DOS windows have closed, you may exit the module.



Technical Support

After reading this Software User Guide, if you need additional assistance, please contact Aleratec Technical Support. Our technical staff will be happy to assist you, but they may need your help to better assist you. Calling Aleratec Technical Support without all the necessary information can be both time consuming and frustrating. Therefore, please try to have your questions about the 1:10 USB Copy Cruiser Mini software ready before calling. Please provide enough information about your problems so our technical staff can recreate and diagnose it.

Technical Support Addresses and Phone Numbers

► By e-mail: **support@aleratec.com**

► By Telephone: **1-818-678-0484**

Technical Support Group can be reached 8:00 AM to 5:00 PM, Pacific Time, Monday through Friday, excluding U.S. holidays.

Please try to call from a phone near your computer system.

► Access is available 24 hours a day, 365 days a year, via:
The World Wide Web at: **www.aleratec.com**

FAX at: **1-818-678-0483**

Technical Support FAX Back Form

Aleratec, Inc. Technical Support Fax Back Form

Please record the following information to help expedite any warranty claim:

Model No.: _____ Serial No.: _____

Date Purchased _____

Place of Purchase: _____

To: Technical Support Group FAX: 1-818-678-0483

FROM: _____ FAX: _____

E-MAIL _____

RE: _____ TEL: _____

DATE: _____ # OF PAGES: _____

I am experiencing the following problems with my 1:10 USB Copy Cruiser Mini:

By answering these questions, your problem will be solved more rapidly. Make copies as necessary. You can reach us electronically at: www.aleratec.com on the internet.

Document Number: 330109_SUG_ENG_Rev. A
Specifications subject to change without notice.

Copyright © 2011

Aleratec, Inc.
9851 Owensmouth Avenue
Chatsworth, CA 91311 U.S.A.

www.aleratec.com